



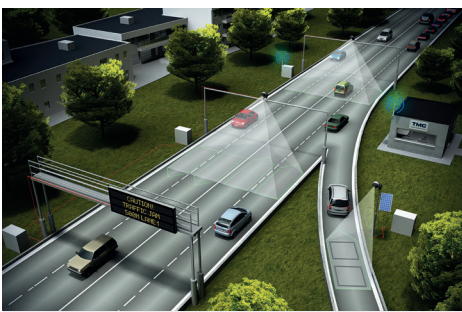
VEHICLE PRESENCE SENSOR

TrafiCam Series



The FLIR TrafiCam combines a CMOS camera and video detector into a single vehicle presence sensor. Detecting moving and stationary vehicles at signaled intersections, TrafiCam transmits vehicle presence information to traffic controllers via detection outputs or IP protocol for dynamic signal timing. Each cost-effective TrafiCam sensor helps reduce vehicle wait time and optimize traffic flow.

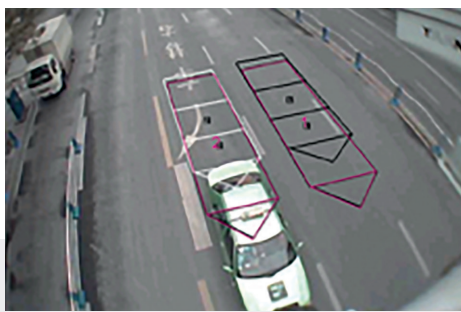
www.flir.com/its



DIRECTION-SENSITIVE VEHICLE DETECTION

TrafiCam detects vehicles over multiple lanes in any direction.

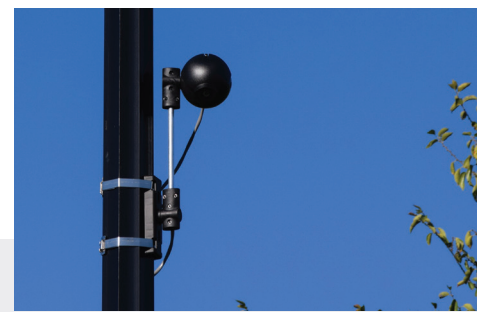
- Real-time traffic verification and monitoring
- Gather data on up to four lanes simultaneously
- Reliable data collection, queue detection, and traffic flow monitoring



EASY CONFIGURATION, VISUAL VERIFICATION

Position and verify custom vehicle presence detection zones

- Detection zones displayed via live video feed
- Presence zones are easily repositioned in changing traffic situations



SIMPLE INSTALLATION

TrafiCam mounts onto existing infrastructure and quickly integrates with existing platforms.

- Non-intrusive, above-ground installation
- Detection output and IP protocol data transmission

SPECIFICATIONS

Thermal Sensor & Optics		TrafiCam	TrafiCam x-stream	
Detection Functionality		Vehicle presence	Vehicle presence, data collection	
# of Detection Zones		8	24 presence zones 4 data zones	
# of Detection Outputs		4 via interface 1TI 8 via interface 4TI ETH 8 via 4TI ETH EDGE & 4/Os xp*	3 for ETH versions, direct or via optional ETH interface 16 for BPL versions via TI x-stream BPL	
Camera				
Resolution	640 × 480 (VGA)			
Frame Rate	20 fps		25 fps	
Lens Type	Wide	Narrow	Wide	Narrow
Focal Distance	2.1 mm	6 mm	2.1 mm	6 mm
Detection Range	0-25 m	15-75 m	0-25 m	15-75 m
Mounting Height	3.5-12 m			
CMOS Type	1/4" black & white		1/4" color	
Compression	JPEG		MJPEG, MPEG-4, H.264 (dual stream)	
Housing				
Material	Aluminum			
Dimensions	Vertically mounted: 45 cm × 16 cm × 12 cm Horizontally mounted: 41 cm × 18 cm × 12 cm			
Sunshield	Optional			
Power, Outputs, and Communication				
Operating Voltage	12-26 VAC/DC		12-32 VAC, 12-42 VDC	
IP Address	No		Yes	
Communications PC - Sensor	Via interface		Via interface or direct (ETH)	
Interfaces	1TI, 4TI ETH, 4TI ETH EDGE*		TI x-stream for BPL sensors, optional ETH interface for ETH sensors	
Outputs	4 for 1TI 8 for 4TI ETH 4 for 4TI ETH EDGE**		16 for BPL (PN 10-6085) 3 for ETH (PN 10-6075)	
PC Setup	TrafiCam PC Tool		TrafiCam Configuration Tool (TCT)	
Regulatory & Environmental				
EMC	Electromagnetic Compatibility 2014/30/EU			
FCC	FCC Part 15 Class A			
Temperature Range	-34° to 80°C			
Materials	Weatherproof (UV-resistant)			
Protection Grade	IP67		Housing = IP68 Connectors = IP67	

* US Only

** 4 extra outputs via 4/Os xp expansion board

Part numbers

TrafiCam	Lens type	Focal distance	Detection distance
10-6090A	Wide	2.1 mm	0 - 25 m
10-6091A	Narrow	6.0 mm	15 - 75 m
TrafiCam x-stream	Lens type	Focal distance	Detection distance
10-7000	Wide BPL	2.1 mm	0 - 25 m
10-7008	Wide ETH	6.0 mm	0 - 25 m
10-7001	Narrow BPL	2.1 mm	15 - 75 m
10-7009	Narrow ETH	6.0 mm	15 - 75 m

Interfaces

10-6078	1TI
10-6077	4TI ETH
10-6083	4TI ETH EDGE (*) (**)
10-6085	TI x-stream BPL
10-6075	ETH interface
10-4670	4/Os xp

Specifications are subject to change without notice. For the most up-to-date specs, go to www.flir.com

CORPORATE HEADQUARTERS
FLIR Systems, Inc.
27700 SW Parkway Ave.
Wilsonville, OR 97070
USA
PH: +1 866.477.3687

FLIR ITS
Hospitaalweg 1B
B-8510 Marke
Belgium
PH: +32.0.56.37.22.00

www.flir.com
NASDAQ: FLIR

Equipment described herein is subject to US export regulations and may require a license prior to export. Diversion contrary to US law is prohibited. Imagery for illustration purposes only. Specifications are subject to change without notice. ©2019 FLIR Systems, Inc. All rights reserved. 05/19

19-1173-ITS



The World's Sixth Sense®