



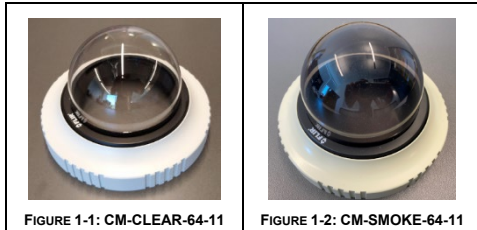
CM-CLEAR-64-11 / CM-SMOKE-64-11

Bubble for CM-640x Mini-Dome Cameras

Installation Guide

1. Product Overview

This guide explains how to attach a CM-CLEAR-64-11 clear bubble or a CM-SMOKE-64-11 smoked bubble to a Quasar™ Mini-Dome CM-640x camera.



Required Tool

- Philips head screwdriver

Related Documentation

- CM-640x Quick Install Guide
- CM-640x Installation and User Guide

2. Preparation

Make sure the existing or previous cover and its anti-drop cable have been removed from the camera according to the instructions in the camera's documentation.

3. Installation

1. Attach the new cover's anti-drop cable to the camera body by tightening the Philips head screw on the base.



FIGURE 3-1: ATTACH ANTI-DROP CABLE TO CAMERA

2. Using the two guide pins on the dome cover, carefully align and position the dome cover onto the base.

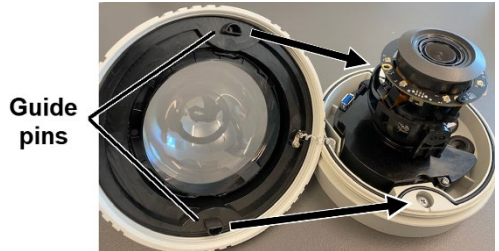


FIGURE 3-2: ATTACH COVER TO CAMERA

3. Securely tighten the outer ring.
4. Using the Torx wrench and the screw removed when removing the dome cover, lock the ring into place.

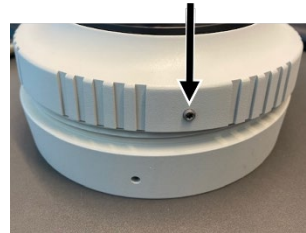
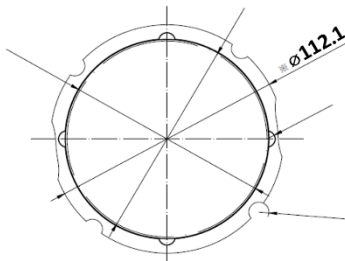


FIGURE 3-3: OUTER RING LOCKING SCREW



Unit: mm

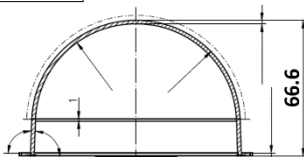


FIGURE 1-3: BUBBLE DIMENSIONS

Package Contents

Check if everything in the package matches your purchase order form and packing slip. The package should include the following items:

- 1x camera cover with bubble and anti-drop cable
- 1x Torx wrench
- 1x this printed installation guide

Prior to installation, make sure none of the parts are damaged. If any item is missing or damaged, contact your dealer.