



Elara™ FR-345-EST

Release Notes

Firmware v1.0.0.40

© 2020 FLIR Systems, Inc. All rights reserved worldwide. No parts of this document, in whole or in part, may be copied, photocopied, translated, or transmitted to any electronic medium or machine readable form without the prior written permission of FLIR Systems, Inc.

Names and marks appearing on the products herein are either registered trademarks or trademarks of FLIR Systems, Inc. and/or its subsidiaries. All other trademarks, trade names, or company names referenced herein are used for identification only and are the property of their respective owners. This product is protected by patents, design patents, patents pending, or design patents pending. The contents of this document are subject to change.

FLIR Systems, Inc.

6769 Hollister Ave

Goleta, CA 93117

USA

Phone: 888.747.FLIR (888.747.3547)

International: +1.805.964.9797

For technical assistance, please call us at +1.888.388.3577 or visit the Support page at

<https://www.flir.com/support/>.

Document History

Revision	Date	Comment
100	December 22, 2020	v1.0.0.40 Initial FLIR release

Table of Contents

1	Version Content	4
1.1	Firmware Version Details and Download Locations.....	4
1.2	DNA Tool.....	4
2	Supported Products and Platforms	5
3	Key Features	6
4	Upgrading the Camera Firmware	7
5	Known Issues and Limitations	9
6	Disclaimer	10



1 Version Content

This release supports the [Key Features](#) in section 3. These release notes also document [Supported Products and Platforms](#), [Upgrading the Camera Firmware](#), and [Known Issues and Limitations](#).

1.1 Firmware Version Details and Download Locations

Firmware	v1.0.0.40
Download URL	https://flir.box.com/v/FR345ESTFirmwareV10040

1.2 DNA Tool

Download FLIR DNA (Discovery Network Assistant) v2.3.0.19 from [here](https://flir.box.com/v/DNA23019forFR345EST) (<https://flir.box.com/v/DNA23019forFR345EST>).

Important

DNA v2.3.0.19 provides full support for the Elara FR-345-EST camera. Earlier DNA versions do not.



2 Supported Products and Platforms

This release supports:

Product/Platform Name	Description
Elara FR-345-EST	Fixed-mount radiometric IP visible & thermal camera for measuring skin temperature
FLIR Discovery Network Assistant	Version: 2.3.0.19
Microsoft Windows®	Version: 10
Web browsers	Camera web interface fully supports the latest version of Google Chrome®, and provides limited support for the latest versions of Mozilla Firefox®, Microsoft Edge®, and Microsoft Internet Explorer®.
United VMS	Latitude/Horizon/Meridian update 8.0.5 and later
Third-party VMSs	Milestone Corporate, Genetec, exacqVision
ONVIF® Test Tool	V20.06



Note

Do not use this firmware version in any other device or for any other purpose.



3 Key Features

This firmware release includes the following features:

- Onboard CNN-based analytics automatically detects face, mask, and eye-wear; and locates the inner canthus (corner of the eye)
- On-screen display (OSD) guides the person being screened to proper distance and head pose
- Radiometric thermal camera measures the temperature with accuracy of $\pm 0.5^{\circ}\text{C}$ ($\pm 0.9^{\circ}\text{F}$)
- Visual and audio pass / fail confirmations via the camera's web page
- Portrait, landscape, and full-screen modes available for installation flexibility
- Visible/thermal camera settings
- H.264 and MJPEG codecs
- UDP and TCP unicast and multicast streaming
- Network settings
- IEEE 802.1X support
- TLS support for control and video
- Date/time/NTP settings
- NTP via DHCP
- GPIO (control)
- FLIR SDK (CGI)
- DNA support for discovery, network settings, and firmware upgrade

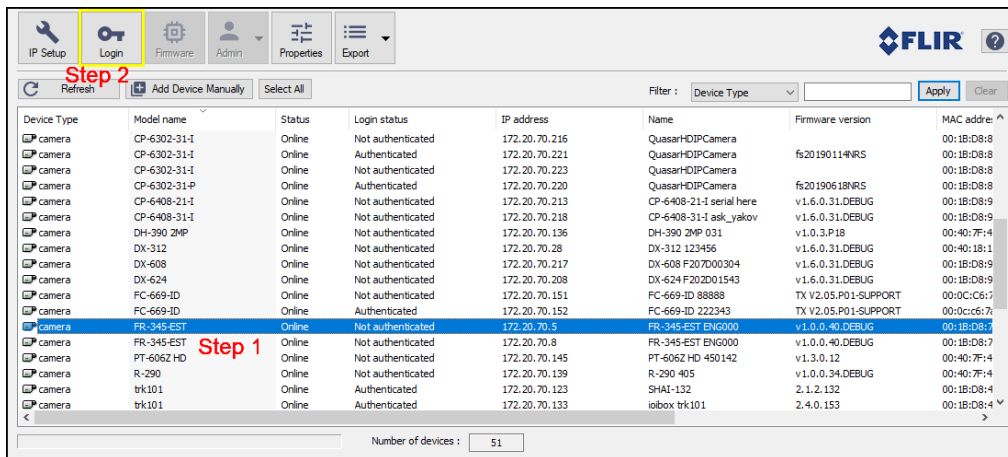
4 Upgrading the Camera Firmware

Before upgrading the camera firmware, download it from the [Firmware Location](#).

To upgrade the camera firmware, you can use DNA v2.3.0.19 or the camera's web page. For information about how to upgrade the firmware using camera's web page, see the camera's installation and user guide.

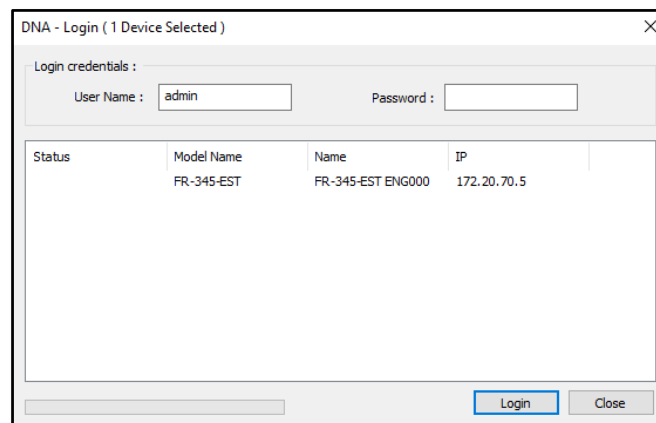
To upgrade the camera's firmware using the DNA tool:

1. Open the DNA tool and select the camera(s) you are upgrading from the Discover List.



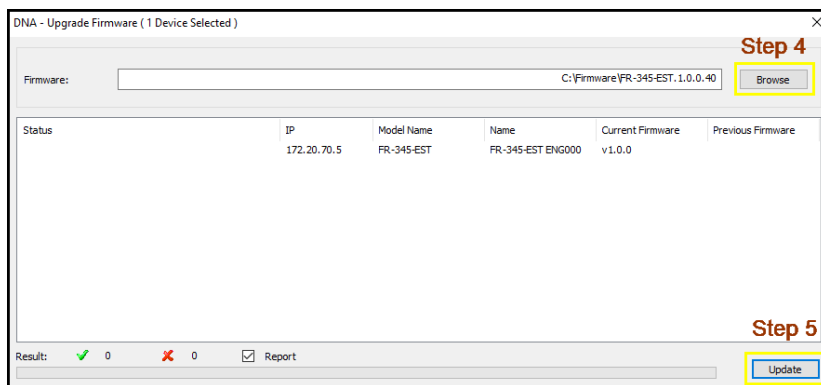
2. Authenticate the camera.

- a. Click **Login**.
- b. In the **DNA - Login** window, make sure *admin* is the User Name, type the password for the admin user (default: *admin*), and then click **Login**.



- c. After the Status becomes **OK**, click **Close**. In the Discover List, the camera login Status is now *Authenticated*.

3. From the Discover List, select the camera again and click **Firmware**.
4. In the **Update Firmware** window, click **Browse**, and then select the firmware upgrade file.



5. Click **Update**.



5 Known Issues and Limitations

The following table lists the known issues and limitations in this release:

Issue ID	Summary	Comment
CEST-113	Date/Time – Copy PC Time has an offset	
CEST-151	VMS > Latitude – Camera discovery changes rotation to 0.	Latitude limitation
CEST-152	VMS > Latitude – Changing the rotation or video format for one camera does not change the rotation or video format for the other camera	Latitude limitation
CEST-157	Camera web page > OSD: On visible streams, when OSD is enabled and the screening overlay is also enabled, the OSD constantly flickers.	
CEST-182	VMS > Genetec & Milestone > thermal video stream > Actual frame rate is different than the configured setting.	
CEST-194	When HTTPS redirect is enabled, the device is not discovered via UPNP.	
CEST-198	Unable to upgrade the camera via port forwarding.	
CEST-199	If HTTPS is enabled, communication with the camera via port forwarding is not possible.	
CEST-208	Camera web page > If the screening overlay is disabled with the Clear message on-screen, the message does not disappear.	
CEST-210	VMS > Latitude 8.0.4.6125 – It is not possible to configure thermal video settings.	
CEST-211	VMS > Latitude 8.0.5.6130 – After setting the image rotation to 90 degrees, it is not possible to change the video resolution	
CEST-212	Camera web page > Screening page > Layout Configuration > Status messages: Remove Low temperature status	
CEST-213	NTSC – The maximum frame rate is 29 FPS. When a user tries to change the setting to 30 FPS in the camera web page, the camera's actual frame rate and the setting do not change.	
CEST-214	NTSC – The maximum frame rate from the thermal sensor is 25 FPS instead of 30 FPS.	



6 Disclaimer

By providing this document, FLIR Systems, Inc. is not making any representations regarding the correctness or completeness of its contents and reserves the right to alter this document at any time without notice.

© FLIR Systems, Inc. 2020. All rights reserved.

FLIR Systems, Inc.

6769 Hollister Ave.
Goleta, CA 93117
USA
PH: +1 805.964.9797
PH: +1 877.773.3547 (Sales)
PH: +1 888.747.3547 (Support)
FX: +1 805.685.2711
<http://www.flir.com/security>

Corporate Headquarters

FLIR Systems, Inc.
27700 SW Parkway Ave.
Wilsonville, OR 97070
USA
PH: +1 503.498.3547
FX: +1 503.498.3153