



CP-6408 Range

Release Notes

Firmware v1.6.0.31

© 2020 FLIR Systems, Inc. All rights reserved worldwide. No parts of this document, in whole or in part, may be copied, photocopied, translated, or transmitted to any electronic medium or machine readable form without the prior written permission of FLIR Systems, Inc.

Names and marks appearing on the products herein are either registered trademarks or trademarks of FLIR Systems, Inc. and/or its subsidiaries. All other trademarks, trade names, or company names referenced herein are used for identification only and are the property of their respective owners. This product is protected by patents, design patents, patents pending, or design patents pending. The contents of this document are subject to change.

FLIR Systems, Inc.

6769 Hollister Ave

Goleta, CA 93117

USA

Phone: 888.747.FLIR (888.747.3547)

International: +1.805.964.9797

For technical assistance, please call us at +1.888.388.3577 or visit the Support page at

<https://www.flir.com/support/>.

Document History

Revision	Date	Comment
100	February 26, 2020	v1.6.0.16; CP-6408-21-I only
110	September 3, 2020	v1.6.0.31; added CP-6408-31-I

Table of Contents

1	Version Content	4
1.1	Firmware Version Details and Download Locations	4
1.2	DNA Tool	4
2	Supported Products and Platforms	5
3	Key Features	6
3.1	4K Video Stream Support	6
3.2	PTZ Control.....	6
3.3	PTZ Tour	6
3.4	Enhanced Low Light Sensitivity & WDR.....	6
3.5	IR LED Control.....	6
3.6	Enhanced Cybersecurity.....	6
3.7	Additional Interfaces	6
3.8	Manual Exposure Mode, including Shutter Speed Setting	6
3.9	Highlight Compensation.....	6
4	Upgrading the Camera Firmware	7
5	United VMS Compatibility	9
6	Known Issues and Limitations	10
7	Disclaimer	12



1 Version Content

This release supports the [Key Features](#) in section 3. These release notes also document [Supported Products and Platforms](#), [Upgrading the Camera Firmware](#), and the [Known Issues and Limitations](#).

1.1 Firmware Version Details and Download Locations

Firmware Version	v1.6.0.31
Download URL	https://flir.box.com/v/CP6408FirmwareV16031

1.2 DNA Tool

Download FLIR DNA (Discovery Network Assistant) from [here](https://flir.box.com/v/DNA-Software) (<https://flir.box.com/v/DNA-Software>).



2 Supported Products and Platforms

This release supports:

Product/Platform Name	Description
CP-6408 Range	Indoor/outdoor 4K-capable PTZ IP cameras. The cameras support up to two streams at 8MP. The units feature True Day/Night (ICR) and infrared LED illuminators.
CP-6408-21-I	22x optical zoom
CP-6408-31-I	31x optical zoom; lens wiper supporting optional wash kit
FLIR Discovery Network Assistant	Version: 2.3.0.12
Microsoft Windows®	Version: 10
Web browsers	Camera web interface fully supports the latest version of Google Chrome®, and provides limited support for the latest versions of Mozilla Firefox®, Microsoft Edge®, and Microsoft Internet Explorer®.
United VMS	Latitude/Horizon/Meridian update 8.0.5 and later; see United VMS Compatibility
Third-party VMSs	Milestone Corporate, Genetec, exacqVision, Avigilon (CP-6408-21-I only)
ONVIF® Test Tool	V20.06

Note

Do not use this firmware version in any other device or for any other purpose.



3 Key Features

3.1 4K Video Stream Support

The camera supports up to two video streams at a maximum of 30 fps at 4K (3840 x 2160) and 30 fps at VGA (640 x 480). The camera supports H.264 & MJPEG video compression.

3.2 PTZ Control

The camera provides PTZ control, including movement (pan, tilt, and zoom), assigning presets, and assigning a home position. The camera provides 22x (CP-6408-21-I) or 31x (CP-6408-31-I) optical zoom on evidentiary 4K resolution; comparable to 44x / 62x optical zoom on a 1080p camera.

3.3 PTZ Tour

This firmware release supports configuring a tour of presets and specifying the amount of time the camera dwells at each tour stop.

3.4 Enhanced Low Light Sensitivity & WDR

The camera provides a particularly sensitive image in low light conditions, prolonging the amount of time it can provide usable color video. In addition, it provides True/Shutter WDR and noise reduction.

3.5 IR LED Control

The camera provides IR LEDs that can automatically activate and illuminate to up to 200 meters (656 feet).

3.6 Enhanced Cybersecurity

The camera supports the configuration and use of TLS and IEEE 802.1X; it also has an internal firewall.

3.7 Additional Interfaces

The camera supports audio in, audio out, alarm in, and alarm out.

3.8 Manual Exposure Mode, including Shutter Speed Setting

This firmware release supports specifying a manual exposure mode that supports the configuration of a fixed shutter speed, iris size, and gain.

3.9 Highlight Compensation

This firmware release supports Highlight Compensation (HLC), which detects areas of the image overexposed by bright light sources such as headlights or spotlights and reduces image exposure only in these areas to enhance overall image quality.

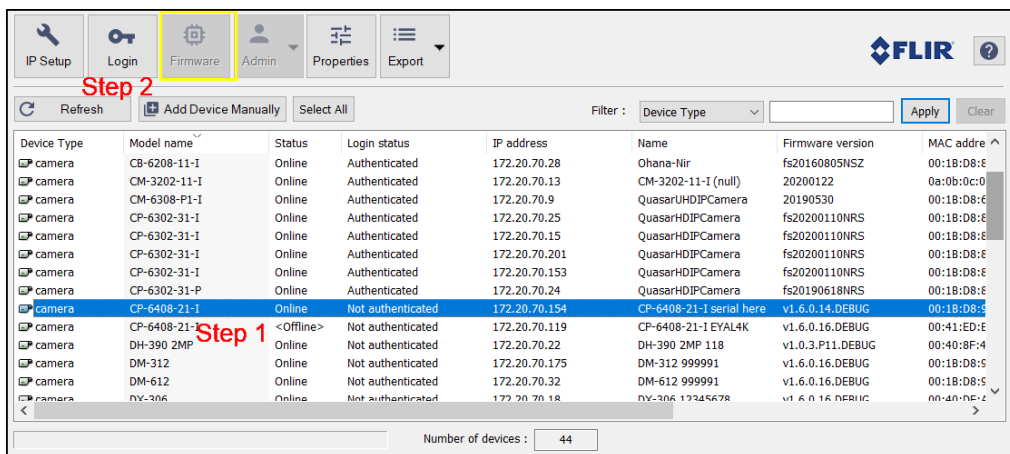
4 Upgrading the Camera Firmware

Before upgrading the camera firmware, download it from the [Firmware Location](#).

To upgrade the camera firmware, you can use the DNA tool or the camera's web page. For information about how to upgrade the firmware using camera's web page, see the camera's installation and user guide.

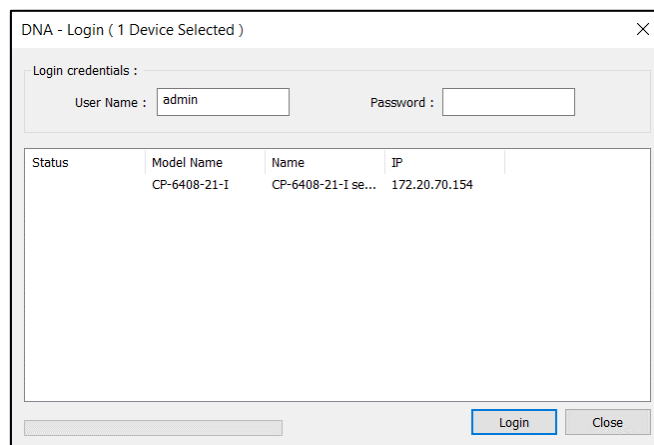
To upgrade the camera's firmware using the DNA tool:

1. Open the DNA tool and select the camera(s) you are upgrading from the Discover List.



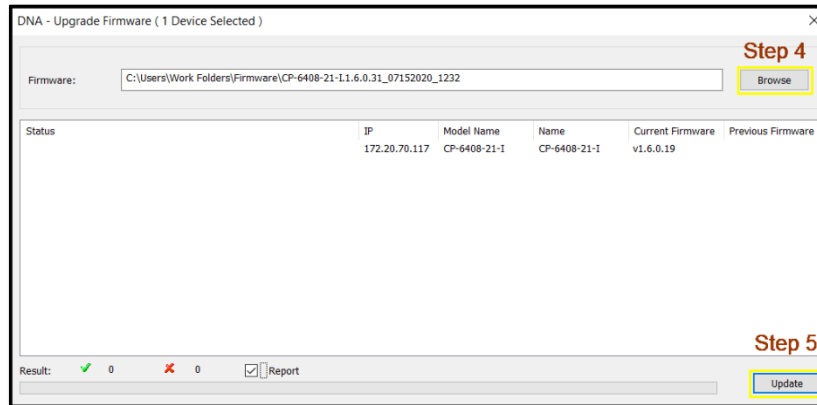
2. Authenticate the camera.

- a. Click **Login**.
- b. In the **DNA - Login** window, make sure *admin* is the User Name, type the password for the admin user (default: *admin*), and then click **Login**.



- c. After the Status becomes **OK**, click **Close**. In the Discover List, the camera login Status is now *Authenticated*.

3. From the Discover List, select the camera again and click **Firmware**.
4. In the **Update Firmware** window, click **Browse**, and then select the firmware upgrade file.



5. Click **Update**.



5 United VMS Compatibility

This firmware release is approved for United VMS 8.0.5 or higher.

To use United VMS 8.0, you need to install an Update Patch. For more information, see the UVMS support documentation.

Earlier United VMS versions, from 7.0 and later, support this camera and firmware, with limitations regarding adaptive streaming, and other video and picture settings. In addition, when using the FLIR plugin for discovery, use port 80 instead of the default 8081.

To discover a CP-6408-21-I or -31-I camera in Admin Center, for the Unit Type, select **FLIR**.



6 Known Issues and Limitations

The following table lists the known issues and limitations in this release:

Issue ID	Summary
VE-112	Camera web page > System Settings > Firmware & Info > Compatibility mode for legacy VMS versions setting appears
VE-106	LiDAR causes refocusing issue when camera is shaking or moving a little bit
VE-102	VMS - Avigilon - Continuous video cuts
V4KIR-390	VMS - exacqVision - Built-in Aux Commands do not work
VE-98	
VE-99	ONVIF - Issue with idle state in outputs
V4KIR-389	ONVIF & VMS - Changing the Sharpness setting has no noticeable effect
VE-97	
V4KIR-387	ONVIF & VMS - PTZ Speed does not work for relative and absolute movements
VE-95	
VE-93	VMS - Avigilon - Audio level too low
V4KIR-370	
V4KIR-384	VMS - Genetec - Built-in Aux Commands not detected
VE-90	
VE-89	ONVIF - Camera cannot change night mode when set to AUTO
V4KIR-382	
VE-88	EIS does not work
V4KIR-371	VMS - Genetec - VBR does not deliver more than 3Mbps
V4KIR-369	VMS - exacqVision - Focus controls do not work
V4KIR-368	VMS - exacqVision - Audio delays
V4KIR-364	VMS - Milestone - Audio delays
V4KIR-342	Video - H264 Bit rate - Actual bit rate is higher than specified
V4KIR-341	ONVIF & VMS - Avigilon - WDR Level setting not retained kept after reboot
V4KIR-322	UVMS - Latitude opens two streams simultaneously (video is corrupt)
V4KIR-320	Camera web page - Video TAB - The I-Frame Interval setting appears when MJPEG codec is selected
V4KIR-319	Camera web page - Video TAB - The I-Frame Interval setting appears twice when H264 is selected
V4KIR-312	ONVIF > User account with role=user cannot control over the PTZ (different behavior than web page)
V4KIR-311	ONVIF & VMS - H264 Quality setting has no effect on the bandwidth
V4KIR-310	Web page - Firefox - Unable to create users
V4KIR-303	ONVIF - Camera declares AAC as available
V4KIR-295	PTZ > Go to preset does not switch to autofocus
V4KIR-296	Analog video out (BNC connector) does not work
V4KIR-276	Beta case #0024203 - Car lights are pulsing in the video
V4KIR-251	Beta case #0023400 - VMS - Genetec - Tearing/drops on the video compared with VLC



V4KIR-239	VMS - Milestone - Problems when changing the codec from H264 to MJPEG with the maximum resolution selected
V4KIR-227	VMS - Avigilon - Issues detected when the camera is added via HTTPS
V4KIR-224	VMS - Milestone - MJPEG - HTTP Snapshot streaming method does not work
V4KIR-216	Avigilon I/O - Digital Outputs - Several issues
EAGLE-318	Web page > Washer > Washer Position > If the camera was ZOOMED IN and then press GOTO button, the camera moves to the correct position, but the zoom does not
EAGLE-294	Web page > Firmware & Info > After FULL RESET or PARTIAL RESET, the PTZ zoom goes to Full Zoom IN
EAGLE-282	Eagle, Mini-Eagle, V4KIR, Visible Eagle > PTZ > User actions is set to NONE: Can move the camera through ODM or LATITUDE
EAGLE-190	Wiper > Wash > Duration range starts at 0 sec.; should start at 1 sec.
EAGLE-140	System still creates the /share_temp DLTVimage.jpeg even when there is no active web session



7 Disclaimer

By providing this document, FLIR Systems, Inc. is not making any representations regarding the correctness or completeness of its contents and reserves the right to alter this document at any time without notice.

© FLIR Systems, Inc. 2020. All rights reserved.

FLIR Systems, Inc.

6769 Hollister Ave.
Goleta, CA 93117
USA
PH: +1 805.964.9797
PH: +1 877.773.3547 (Sales)
PH: +1 888.747.3547 (Support)
FX: +1 805.685.2711
<http://www.flir.com/security>

Corporate Headquarters

FLIR Systems, Inc.
27700 SW Parkway Ave.
Wilsonville, OR 97070
USA
PH: +1 503.498.3547
FX: +1 503.498.3153