

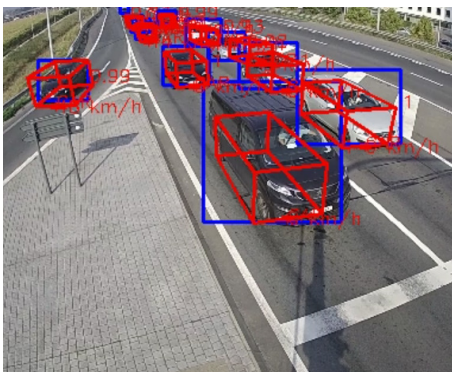


AI-POWERED HD TRAFFIC SENSOR

TRAFICAM AI

Designed to reliably detect and classify road users, the TrafiCam AI is an intelligent HD visible sensor for traffic monitoring in complex urban environments. Featuring a low-light HD visible camera and AI algorithms built on 25+ years of traffic detection, TrafiCam AI offers detailed vision and data collection for safer, more efficient cities. Capable of tracking multiple objects, the advanced edge-based AI effectively controls intersections and gathers detailed traffic data for better city planning decisions.

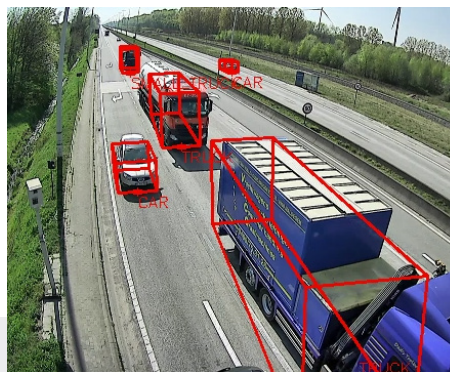
www.flir.com/Traffic



PRECISE DETECTION AND CONTROL

Edge-based AI and Full HD imaging offer advanced intersection control that outperforms other signal control technologies

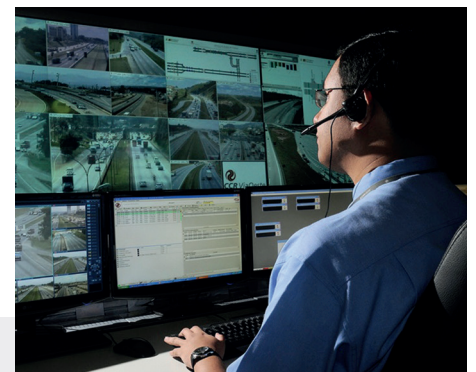
- Low light visual HD camera provides reliable vehicle detection at night and in challenging weather conditions
- Detect the position, speed and heading of vehicles in any direction
- Directly integrate with traffic controllers through accurate virtual loop configuration and dry contacts



FUTUREPROOF TRAFFIC INSIGHT

TrafiCam AI captures advanced and high-resolution traffic data for better-informed city planning decisions

- Automatically detect and classify road users and vehicle types into a wide range of subcategories
- Gather valuable data, including vehicle trajectories throughout intersections
- Provides real-time integration over APIs for adaptive and predictive traffic systems



COMPREHENSIVE REPORTING

Generate automated reports with Acyclica to identify bottlenecks

- Determine the turning movement count per vehicle class at intersections throughout the day
- Measure travel & delay time between intersections
- Streamlined data visualization creates easy-to-read, compelling reasoning for city planning adjustments

TECHNICAL SPECIFICATIONS

System Overview

Functionalities	Vehicle Presence Detection Traffic Data Collection (Integrated Data) Queue Length Monitoring Premium Traffic Data Collection (Individual Data) - optional license
Services	FLIR VSO data - optional Acyclica license Wi-Fi Travel Time analytics - optional Acyclica license Modules (Reporting Module, Planning Module, Signal Timing Tools) - optional Acyclica licenses
Detection Zones	24 virtual loops for presence detection 8 traffic data zones for classification and counting
Configuration	Local/remote web page setup via Wi-Fi, PoE or BPL

Imaging & Optical

Type	CMOS Type 1/2.8 color High Dynamic Range
Resolution	Full HD (1920 x 1080)
Frame Rate	25 fps
Compression	H.264, MJPEG
Streaming Video	RTSP

Product Types

	Part Number	Focal Distance	Detection Distance for Vehicle Presence
TrafiCam AI - Wide	10-7710	2.8 mm	0 - 75 m / 0 - 250ft
TrafiCam AI - Narrow	10-7715	8.0 mm	75 - 150 m / 250 - 500ft

Mechanical

Material	Aluminum housing with integrated polycarbonate sunshield
Dimensions (incl. mounting bracket)	Vertically mounted: 45 cm x 16 cm x 12 cm / 9.8 in x 6.3 in x 4.7 in Horizontally mounted: 41 cm x 18 cm x 12 cm / 16.2 in x 7.1 in x 4.7 in

Electrical

Input power	24-42 VAC / 24-48 VDC
Power consumption	Avg 6 W / Peak 9 W

Communication

Output contacts	1 N/O and 1 N/C dry contact direct 16 N/C dry contacts via TI BPL2 interface 4 N/C dry contacts via TI BPL2 EDGE interface (more with additional 4 I/O USB expansion boards) SDLCL to traffic light controller via TI BPL2 EDGE interface and PIM module
PoE	PoE mode A for configuration, video streaming and data communication
BPL	80 Mbps Broadband over Powerline communication via TI BPL2 (EDGE) interface
Wi-Fi	IEEE 802.11 type b,g,n EIRP < 100mW

Environmental

Shock & Vibration	NEMA TS2 specs
Materials	All weatherproof UV resistant
IP Rating	IP 67
Temperature Range	-34°C to +74°C

Regulatory

FCC / EU Directives	FCC part 15 class A, EMC 2014/30/EU RoHS 2011/65/EU, LVD 2014/35/EU
---------------------	--

Specifications are subject to change without notice. For the most up-to-date specs, go to www.flir.com

CORPORATE HEADQUARTERS

FLIR Systems, Inc.
27700 SW Parkway Ave.
Wilsonville, OR 97070
PH: +1 877.773.3547

FLIR ITS

Hospitaalweg 1B
B-8510 Marke
Belgium
PH: +32 (0)56 37 22 00

www.flir.com
NASDAQ: FLIR

Equipment described herein may require US Government authorization for export purposes. Diversion contrary to US law is prohibited. Imagery for illustration purposes only. Specifications are subject to change without notice. ©2020 FLIR Systems, Inc.
All rights reserved. (10/20)
20-0986-ITS-TrafiCam_A4



The World's Sixth Sense®