



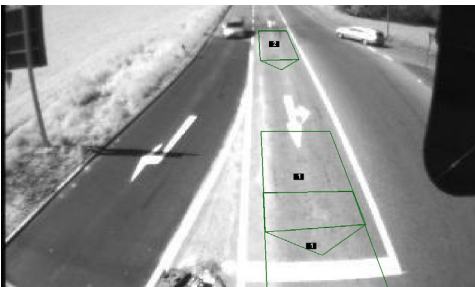
VEHICLE PRESENCE SENSOR

TRAFICAM



The FLIR TraficCam combines a CMOS camera and video detector into a single vehicle presence sensor. Detecting moving and stationary vehicles at signalized intersections, TraficCam transmits vehicle presence information to traffic controllers via detection outputs for dynamic signal timing. Each cost-effective TraficCam sensor helps reduce vehicle wait time and optimize traffic flow.

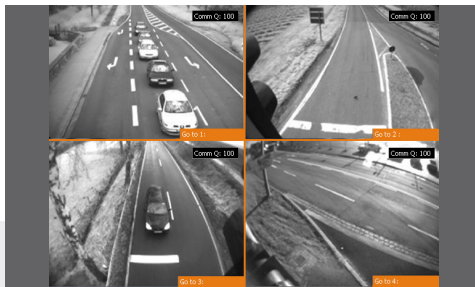
www.flir.com/traffic



DIRECTION-SENSITIVE VEHICLE DETECTION

TraficCam detects vehicles over multiple lanes in any direction.

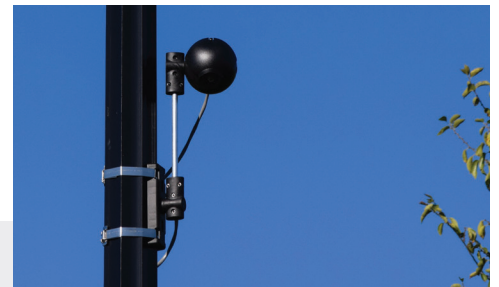
- Real-time traffic verification and monitoring
- Stop bar vehicle presence detection
- Advance detection
- Traffic adaptive requiring accurate zone occupancy measurement
- Ramp metering



EASY CONFIGURATION, VISUAL VERIFICATION

Position and verify custom vehicle presence detection zones

- Detection zones displayed
- Presence zones are easily repositioned in changing traffic situations



SIMPLE INSTALLATION

TraficCam mounts onto existing infrastructure and quickly integrates with existing platforms.

- Non-intrusive, above-ground installation
- Detection output transmission

SPECIFICATIONS

Thermal Sensor & Optics

Detection Functionality	Vehicle presence	
# of Detection Zones	8	
# of Detection Outputs	4 via interface 1TI	8 via interface 4TI ETH
	8 via 4TI ETH EDGE & 4/Os xp*	

Camera

Resolution	640 x 480 (VGA)	
Frame Rate	20 fps	
Lens Type	Wide	Narrow
Focal Distance	2.1 mm	6 mm
Detection Range	0-25 m / 0-85 ft	15-75 m / 50-250 ft
Mounting Height	3.5-12 m / 12-40 ft	
CMOS Type	1/4" black & white	
Compression	JPEG	

Housing

Material	Aluminum	
Dimensions	Vertically mounted: 45 cm x 16 cm x 12 cm Horizontally mounted: 41 cm x 18 cm x 12 cm	
Sunshield	Optional	

Power, Outputs, and Communication

Operating Voltage	12-26 VAC/DC	
IP Address	No	
Communications PC - Sensor	Via interface	
Interfaces	1TI, 4TI ETH, 4TI ETH EDGE*	
Outputs	4 for 1TI	8 for 4TI ETH
	4 for 4TI ETH EDGE**	
	4 extra per 4/Os xp.	
PC Setup	TrafiCam PC Tool	

Regulatory & Environmental

EMC	Electromagnetic Compatibility 2014/30/EU	
FCC	FCC Part 15 Class A	
Temperature Range	-34° to 80°C	
Materials	Weatherproof (UV-resistant)	
Protection Grade	IP67	

Part numbers

TrafiCam	Lens type	Focal distance	Detection distance
10-6090A	Wide	2.1 mm	0-25 m / 0-85 ft
10-6091A	Narrow	6.0 mm	15-75 m / 50-250 ft

Interfaces

10-6078	1TI
10-6077	4TI ETH
10-6083	4TI ETH EDGE (*)(**)

* US Only

** 4 extra outputs via 4/Os xp expansion board

Specifications are subject to change without notice. For the most up-to-date specs, go to www.flir.com

CORPORATE HEADQUARTERS
FLIR Systems, Inc.
27700 SW Parkway Ave.
Wilsonville, OR 97070
USA
PH: +1 866.477.3687

FLIR ITS
Hospitaalweg 1B
B-8510 Marke
Belgium
PH: +32.0.56.37.22.00

www.flir.com
NASDAQ: FLIR

Equipment described herein is subject to US export regulations and may require a license prior to export. Diversion contrary to US law is prohibited. Imagery for illustration purposes only. Specifications are subject to change without notice. ©2020 FLIR Systems, Inc. All rights reserved. 11/20

20-1502-ITS



The World's Sixth Sense®