

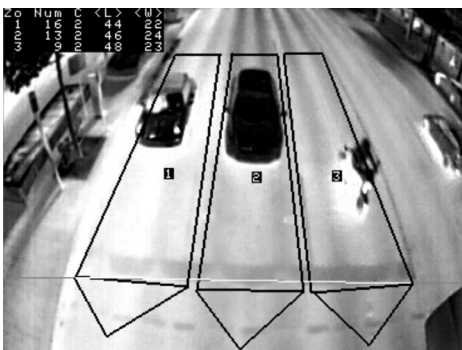


## INTELLIGENT THERMAL TRAFFIC SENSOR

### TrafiData

TrafiData is an intelligent thermal sensor capable of counting and classifying vehicles, bicyclists and pedestrians, in addition to travel-time, for comprehensive congestion analysis. Integrated Wi-Fi technology allows simultaneous thermal-based data collection, while calculating travel-times and origin-destination by securely and anonymously tracking MAC addresses as people move throughout the traffic network. Since the TrafiData relies on thermal energy rather than light, it offers 24/7 traffic monitoring and can detect road users at night, through glare, and in harsh weather conditions.

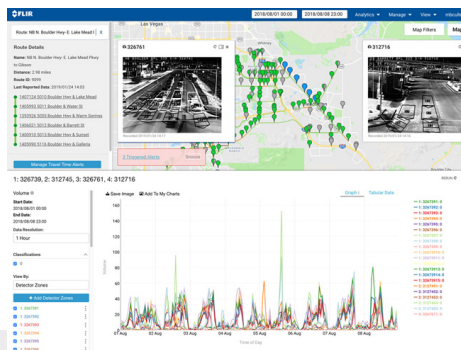
[www.flir.com/Traffic](http://www.flir.com/Traffic)



### Traffic Data Collection

TrafiData collects valuable traffic data using thermal detection and Wi-Fi monitoring at the same time.

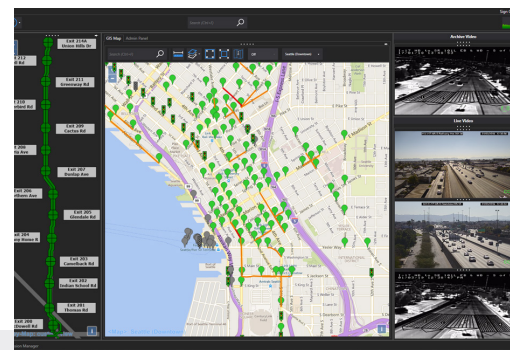
- Anonymously track how road users move and calculate travel and delay times on roadways
- Determine origin destination and turning movement counts
- Collect vehicle class and measure traffic volume, speed, occupancy, headway and gap time
- Monitor roadway performance 24/7



### Web-based Analytics

The Acyclica web-based platform provides an intuitive and power interface for manipulating and understanding traffic on your roads.

- Click to access travel-time, volume, and origin-destination with intuitive charts and tables
- Schedule or subscribe for reports to be delivered directly to your email inbox to simplify access the data when you need it
- Receive alerts on your phone or email when events happen so you are connected to your road network wherever you are
- Monitor trends in traffic conditions over time to identify hot spots and identify issues



### Data Sharing & APIs

TrafiData connects to the Acyclica cloud, where smart analytics transform data into meaningful traffic insights, and can also connect to 3rd party applications.

- Connect seamlessly with 3rd party applications like FLIR Cameleon ITS software for managing VMS signs or other Command and Control applications
- Integrate real-time data with various ATMS systems to trigger signal timing plans to reduce congestion based on actual conditions
- Use map tile interface to integrate FLIR congestion mapping capabilities in your own GIS applications

## TECHNICAL SPECIFICATIONS

System Overview			
Functionality	<b>Traffic data collection:</b> volume, classification; speed, occupancy, headway and gap time integrated data per lane and vehicle class <b>Traffic flow monitoring:</b> flow speed, zone occupancy and Levels of Service (LOS) <b>Congestion monitoring:</b> travel & delay time <b>Acyclica cloud:</b> real-time & historical data, reports, images, APIs		
Configuration	Web page setup via secure Wi-Fi, Ethernet or BPL		
Camera			
Type	Focal Plane Array (FPA), uncooled VOx microbolometer Long wave Infrared (7 – 14 μm)		
Resolution	VGA (640 x 480)		
Frame Rate	30 fps		
Compression	H.264, MPEG-4, MJPEG		
Streaming Video	RTSP		
Product Types			
	Part Number	Resolution	Field of view
TrafiData 690	10-7471	VGA	Horizontal: 90° Vertical: 69°
TrafiData 645	10-7475	VGA	Horizontal: 45° Vertical: 35°
Housing			
Material	Aluminum housing with integrated polycarbonate sunshield		
Dimensions (incl. mounting bracket)	Vertically mounted: 45 cm x 16 cm x 12 cm Horizontally mounted: 41 cm x 18 cm x 12 cm		
Power, outputs, communication			
Input power	24-42 VAC / 24-48 VDC		
Power consumption	Avg 10.5 W Peak 15 W		
Output contacts	1 N/O and 1 N/C dry contacts direct		
PoE	PoE mode A for configuration, video streaming and data communication		
BPL	50 Mbps Broadband over Powerline communication via TI BPL2 interface		
Wi-Fi	IEEE 802.11 b/g/n for configuration and Wi-Fi travel time monitoring via TI BPL2 interface		
Environmental			
Shock & Vibration	NEMA TS2 specs		
Materials	All weatherproof UV resistant		
IP Rating	IP 67		
Temperature Range	-34°C to + 74°C		
Regulatory			
FCC / EU Directives	FCC part 15 class A, EMC 2014/30/EU, RoHS 2011/65/EU, LVD 2014/35/EU, RED 2014/53/EU		

Specifications are subject to change without notice. For the most up-to-date specs, go to [www.flir.com](http://www.flir.com)

**CORPORATE  
HEADQUARTERS**  
FLIR Systems, Inc.  
27700 SW Parkway Ave.  
Wilsonville, OR 97070  
PH: +1 877.773.3547

**FLIR ITS USA**  
1610 Wynkoop St.  
Suite 200  
Denver, Colorado  
PH: +1 888 404 2213

[www.flir.com](http://www.flir.com)  
NASDAQ: FLIR

Equipment described herein may require US Government authorization for export purposes. Diversion contrary to US law is prohibited. Imagery for illustration purposes only. Specifications are subject to change without notice. ©2019 FLIR Systems, Inc. All rights reserved. (05/19)

19-1402-ITS\_EMEA



The World's Sixth Sense®