



SURVEILLANCE SYSTEM FOR LONG-RANGE APPLICATIONS

ThermoVision™ 3000 MultiSensor

The ThermoVision™ (THV) 3000 long-range surveillance system detects and classifies illegal activities and threats in total darkness, smoke, sand haze, and broad daylight conditions. The thermal camera is equipped with a long-wave, cooled Quantum Well Infrared Photodetector (QWIP) and switchable optics offering three different fields of view. It provides excellent situational awareness while also closely monitoring suspect activities in real-time upon detection. Ideal applications include perimeter security, border and coastal surveillance, force protection, and mid-range threat detection.

The THV 3000 is also available as a multi-sensor. A daylight camera, GPS unit, digital magnetic compass, and optionally, a laser range finder, can all be mounted on a quick, accurate pan-tilt. It's unique cooled LWIR sensor is less impacted by sun reflections and sees more details through smoke and sand haze than MWIR systems. The cooled QWIP also detects potential threats at farther distances than uncooled detectors, while providing higher definition details at closer distances.

FEATURES

COOLED QWIP DETECTOR

See what people are carrying at close distances without sending someone into the field to investigate false alarms.

DIGITAL DETAIL ENHANCEMENT (DDE)

Enhanced contrast and image processing enable the operator to see small objects at long distance. This can be the difference between actually seeing a threat or missing it.

TRUE 24/7 SURVEILLANCE

A high-definition color camera in the visible waveband works seamlessly alongside thermal imaging for continuous surveillance on the brightest of days and darkest of nights.

FAST TARGETING

Fast, accurate, easy-to-install pan-tilt effortlessly adapts to multiple slew to cue applications.

HIGH RELIABILITY

Minimize downtime and related service and maintenance costs. The recently upgraded video platform also significantly improves image performance over the previous THV 3000 generation.

APPLICATIONS

DETECT PERSONNEL AND VEHICLES

SECURE BORDERS

**MONITOR PORTS, AIRPORTS,
AND MILITARY BASES**

CRITICAL FACILITIES PROTECTION

SPECIFICATIONS

Thermal Imaging		ThermoVision 3000	
Detector type		Quantum Well Infrared Photodetector (QWIP): 640 x 480 pixels	
Spectral range		8.0 to 9.2µm	
Number of fields of view		3	
WFOV ThermoVision 3000		25° (H) x 19° (V)	
MFOV ThermoVision 3000		7.8° (H) x 5.8° (V)	
NFOV ThermoVision 3000		1.3° (H) x 0.96° (V)	
Thermal sensitivity		30 mK max	
Image frequency		ThermoVision 3000: 25 Hz PAL or 30 Hz NTSC	
Focus		Automatic or Manual	
Electronic zoom		2x, 4x	
Image processing		Digital Detail Enhancement (DDE): yes	
Visual (Multi-Sensor):			
Built-in color TV		NTSC 1/4" Color CCD PAL 1/4" Color CCD	
Optical zoom		1.7° to 57.8° horizontal, continuous	
Electronic zoom		12x continuous	
Pan-Tilt (Pan-Tilt Versions Only)			
Az Range; Az velocity		n x 360°; 0.3° - 65°/sec continuous	
El Range; El velocity		+/-35°; 0.3° - 30°/sec	
Accuracy		1 mrad	
Resolution		0.1 mrad	
Laser Range Finder (Optional on Multi-Sensor)			
Type / range		Erbium glass, eye safe / 80 m to 20 km	
Optional System Features for Multi-Sensor			
Geo positioning internal GPS		Multi-sensor option	
Digital magnetic compass		DMC	
Image Presentation			
Video output		NTSC or PAL composite video, 14-bit digital image data	
Connector types		BNC	
Digital video from multi-sensor		VOIP h.264 video	

Power	
Requirements	18-35 V DC
Consumption	35 W typical - 140 W with heaters
Multi-sensor	55 W typical - 140 W with heaters

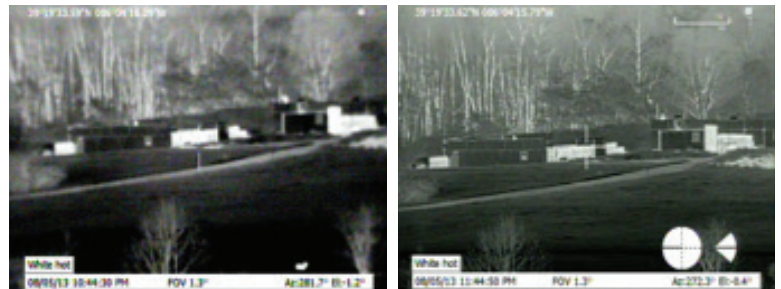
Environmental Specifications	
Operating temperature range	-32°C to +55°C
Storage temperature range	-40°C to +70°C
Automatic window defrost	Yes
Humidity	Mil-Std-810F, 507.4
Rain	Mil-Std-810F, 506.4
Sand/dust	Mil-Std-810F, 510.4
Icing/freezing rain	Mil-Std-810F, 521.2
Shock	Mil-Std-810F, 516.5
Vibration	Mil-Std-810F, 514.5
Solar radiation	Mil-Std-810F, 505.4

Physical Characteristics	
Camera weight	18 kg - 25 kg for multi sensor
Camera size	503 x 312 x 267 mm
Shipping size / Weight sensor head	440 x 630 x 580 mm (h x w x l) 30 kg
Pan/tilt	320 x 350 x 300 mm (h x w x l): 14 kg Pan/Tilt version only
Accessories	440 x 630 x 580 mm (h x w x l) 25 - 30 kg

(Weight is depending on system cable length)

Interfaces	
TCP/IP	Command and control all functions
RS-232	Command and control all functions
RS-485	Command and control all functions

RANGE APPROXIMATELY 2200M



Standard

Upgraded

AMERICAS

FLIR Systems, Inc.
Corporate Headquarters
27700 SW Parkway Ave
Wilsonville, OR 97070
Office: +1 877.773.3547

FLIR Systems, Inc.
DC Headquarters
1201 S. Joyce Street
Suite C006
Arlington, VA 22202
Office: +1 703.682.3400

EUROPE

FLIR Systems
2 Kings Hill Avenue - Kings Hill
West Malling, Kent ME19 4AQ
United Kingdom
Office: +44 (0)1732 220 011
Fax: +44 (0)1732 843 707

FLIR Systems AB
Antennvägen 6,
PO Box 737
SE-187 66 Täby
Sweden
Office: +46 (0)8 753 25 00

MIDDLE EAST

FLIR Systems B.V. - Abu Dhabi
Wadi Al Fey St.
Building 60, Office # 302
New Ministries Exit / Khalifa Park Area
Abu Dhabi, U.A.E.
Office: +971 2 666 1561
e-Fax: +1 503 914 1591

FLIR Systems Saudi Arabia
Office 127, First Floor
Akaria Plaza Building, Olaya Street
Riyadh, 11481, Saudi Arabia
Office: +966 11 464 5323
Fax: +966 11 464 0438

ASIA

FLIR Systems Japan K.K.
Meguro Tokyu Bldg. 5F,
2-13-17
Kami-Osaki, Shinagawa-ku.
Tokyo, 141-0021, Japan
Office: +81-3-6721-6648

For More Information contact
surveillance_sales@flir.com

www.flir.com
NASDAQ: FLIR

Equipment described herein is subject to US export regulations and may require a license prior to export. Diversion contrary to US law is prohibited. Imagery for illustration purposes only. Specifications are subject to change without notice. ©2019 FLIR Systems, Inc. All rights reserved. Revised 02/08/19

19-0354-SUR-THV-3000-SS LTR



The World's Sixth Sense®