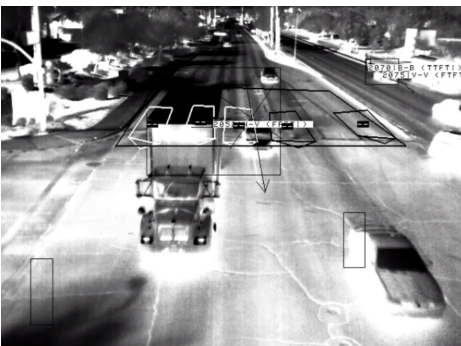


**DUAL-VISION CAMERA FOR INTERSECTION CONTROL AND SAFETY**

# FLIR TRAFISENSE2 DUAL

FLIR TrafiSense2 Dual combines best-in-class thermal and visual imaging technology with advanced video analytics to provide reliable vehicle and bicycle presence detection at signalized intersections, day and night. Thermal imaging lets traffic operators see in total darkness and inclement weather. The daylight camera provides additional visual verification of incidents, such as wrong-way drivers or animals crossing the roadway. In addition, FLIR's analytics capture accurate traffic data, making FLIR TrafiSense2 Dual ideal for traffic monitoring and real-time signal control in urban environments.

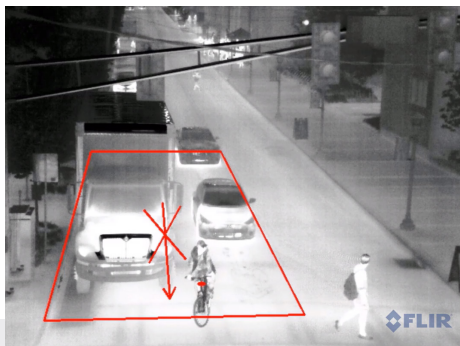
[www.flir.com/Traffic](http://www.flir.com/Traffic)



### 24/7 thermal performance

FLIR TrafiSense2 Dual offers 24/7 performance, regardless of weather conditions.

- Detects traffic day or night
- Won't get confused by sun glare, headlights, shadows, wet streets, snow or light fog
- Different lens options available for specific field of view needs



### Reliable Intersection Control and Safety

FLIR TrafiSense2 Dual provides critical vehicle and bicycle presence detection and data.

- Detects vehicles and bicycles at the stop bar using up to 24 presence zones
- Provides vehicle and bicycle counting, traffic data collection and traffic flow monitoring
- Detects wrong-way drivers and animals entering the roadway



### Visible-light camera for verification

The FLIR TrafiSense2 Dual's visible-light camera provides high-quality images for control room operators.

- HD (1280 x 720) daylight/low light camera
- Provides visual verification and traffic monitoring
- Equipped with an optical zoom and e-zoom

## TECHNICAL SPECIFICATIONS

Model	Part #	Field of View	
		Thermal	Visual
TrafiSense2 Dual 690	10-7570	90°H / 69°V	30-93°H
TrafiSense2 Dual 669	10-7572	69°H / 56°V	30-93°H
TrafiSense2 Dual 645	10-7574	45°H / 37°V	5-54°H
TrafiSense2 Dual 632	10-7576	32°H / 26°V	5-54°H
TrafiSense2 Dual 625	10-7578	25°H / 20°V	5-54°H

### Thermal part

Detector type	Focal Plane Array (FPA), uncooled vanadium oxide microbolometer
Spectral range	Long wave infrared, 7.5-13.5 μm
Resolution	640 × 512 (VGA)
Frame Rate	30 Hz
Compression	MJPEG, MPEG-4, H.264
Traffic Detection functionalities (# detection zones)	Vehicle presence detection & counting (24) Bicycle presence detection & counting (8) Traffic data collection & traffic flow monitoring (6) Wrong-way driver detection (6, requires extra license)

### Visual part

Resolution	1280 × 720 (HD)
Frame rate	25 Hz (configurable from 1 FPS to 25 FPS)
Compression	MJPEG, MPEG-4, H.264
Optical zoom	3x or 10x (Horizontal field of view 30°-93° or 5°-54°)

### Housing

Material	Aluminum, powder-coated, black
Dimensions (L×W×H)	About 8.65 in × 6.89 in × 3.15 in or 22 cm × 17.5 cm × 8 cm
Mass	About 5 lbs or 2.25 kg (excluding mounting bracket)
Sunshield	Integrated and adjustable
Mounting Bracket	Optional, housing is Pelco Astro bracket ready

### Communications

Broadband over Power Line (BPL)	3 wires between sensor and interface. Note: TI BPL2 EDGE interface required
Power over Ethernet (PoE)	4 wires between sensor and interface. Note: FLIR ITS PoE to Power+ETH converter required
Wi-Fi	For system configuration. Note: Wi-Fi can be disabled

### Power

Supply	24-42 VAC, 24-48 VDC (when connected as PoE, use 48 VDC)
Consumption	14W nominal at 24 VDC (up to 25 W with heater on)

### Environmental

Shock & Vibration	NEMA TS2 specs
Materials	All weatherproof (UV-resistant)
Protection Grades	Housing = IP68, Connectors = IP67
Temperature Range	-29°F to 165°F or -34°C to 74°C (ambient temperature)
FCC	FCC part 15 Class A

### Regulatory

EU Directives	Electromagnetic compatibility – 2014/30/EU Low voltage – 2014/35/EU Radio equipment – 2014/53/EU Restriction of hazardous substances – 2011/65/EU
---------------	--

Specifications are subject to change without notice. For the most up-to-date specs, go to [www.teledyneflir.com](http://www.teledyneflir.com)

**Teledyne FLIR ITS**  
Hospitaalweg 1B  
B-8510 Marke  
Belgium  
PH: +32 (0)56 37 22 00

[www.teledyneflir.com](http://www.teledyneflir.com)  
NASDAQ: TDY

Equipment described herein may require US Government authorization for export purposes. Diversion contrary to US law is prohibited. Imagery for illustration purposes only. Specifications are subject to change without notice. ©2021 Teledyne FLIR, LLC. All rights reserved. (07/21)

18-1070-ITS

